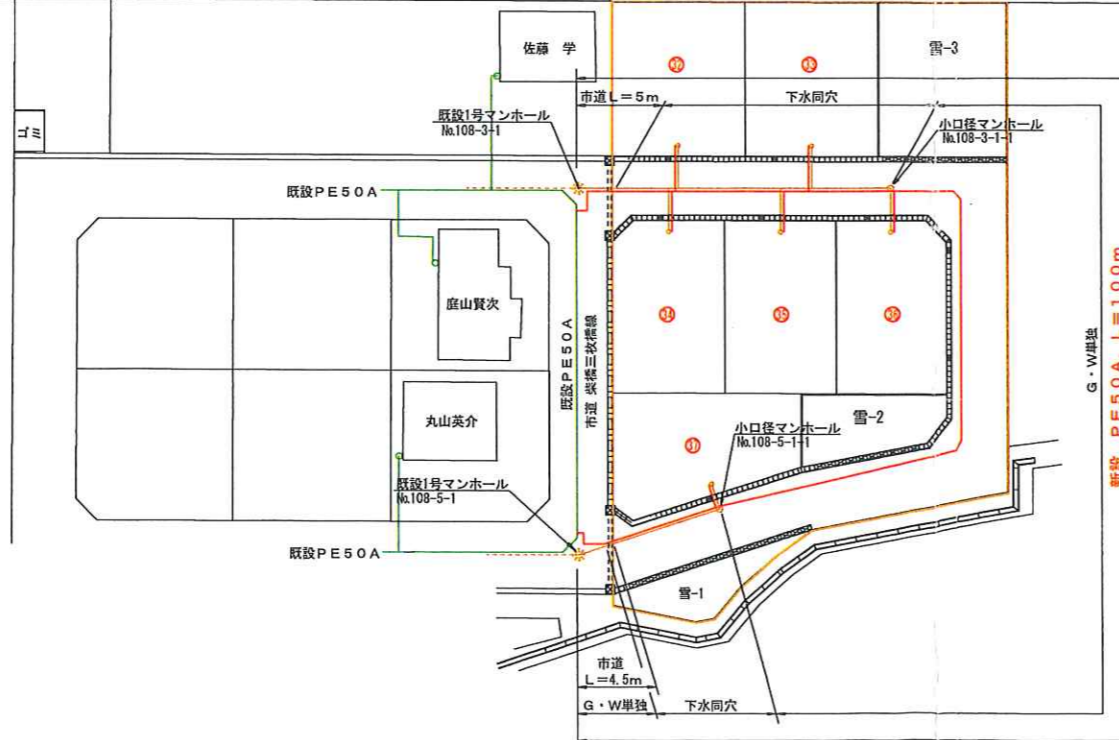
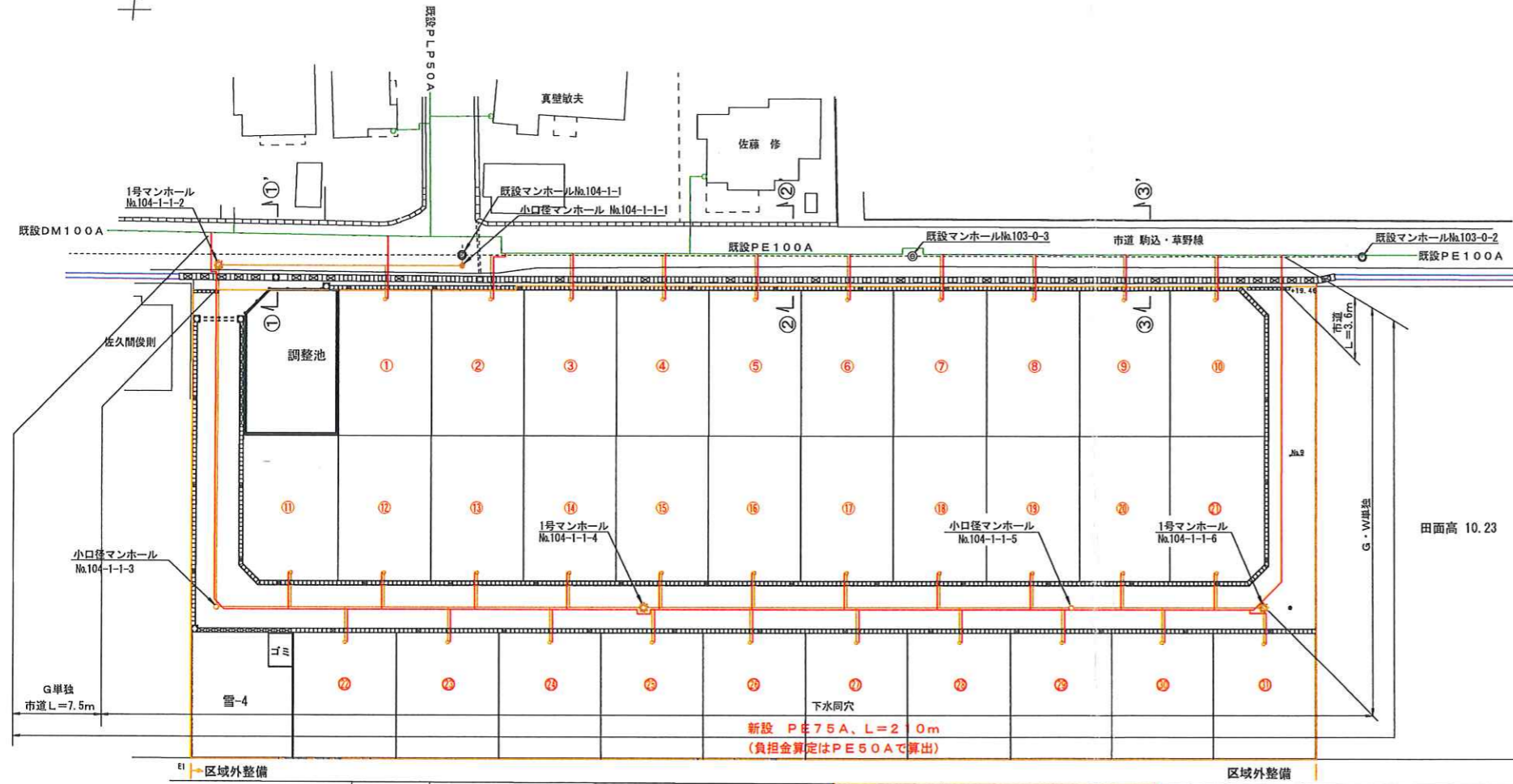




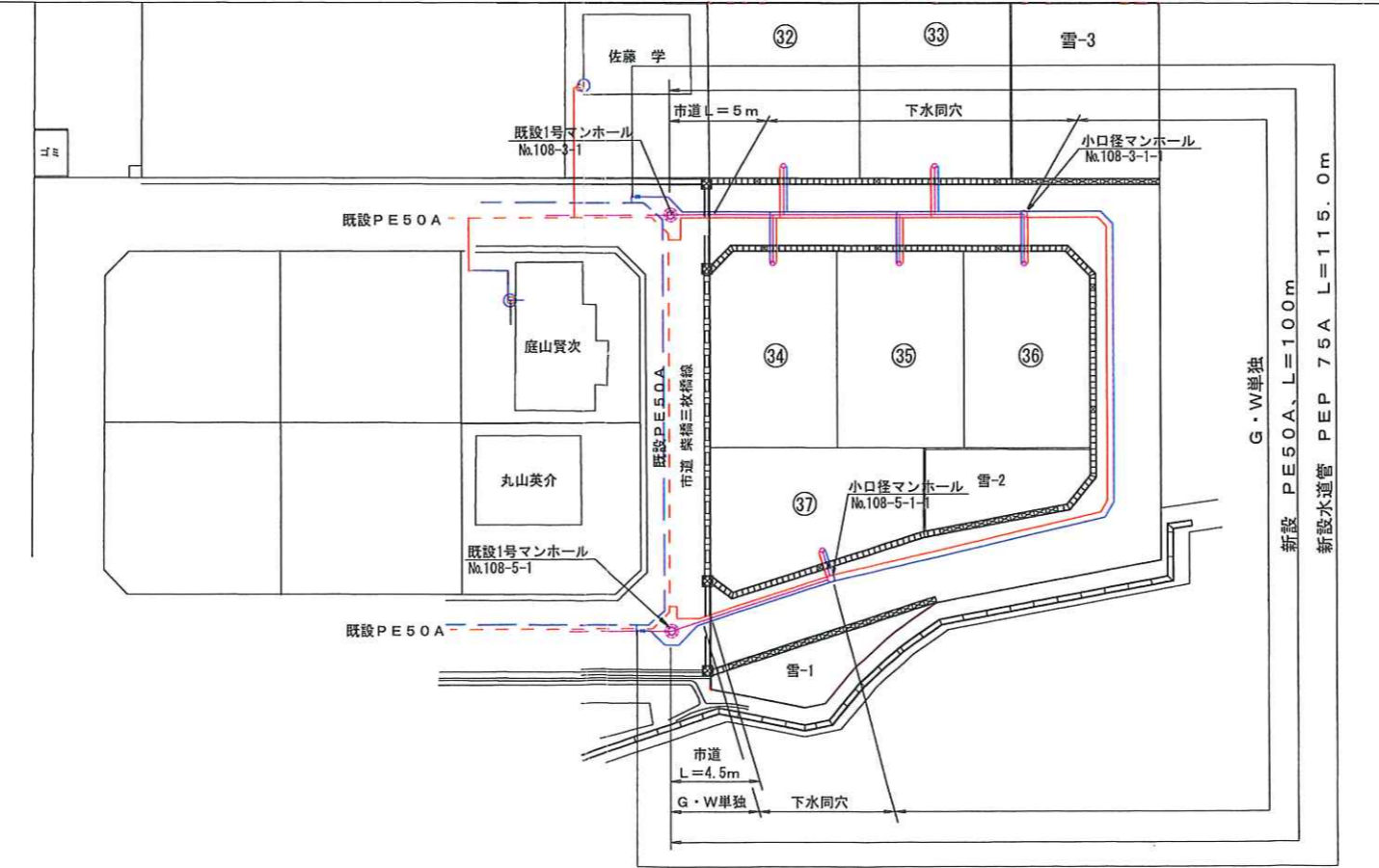
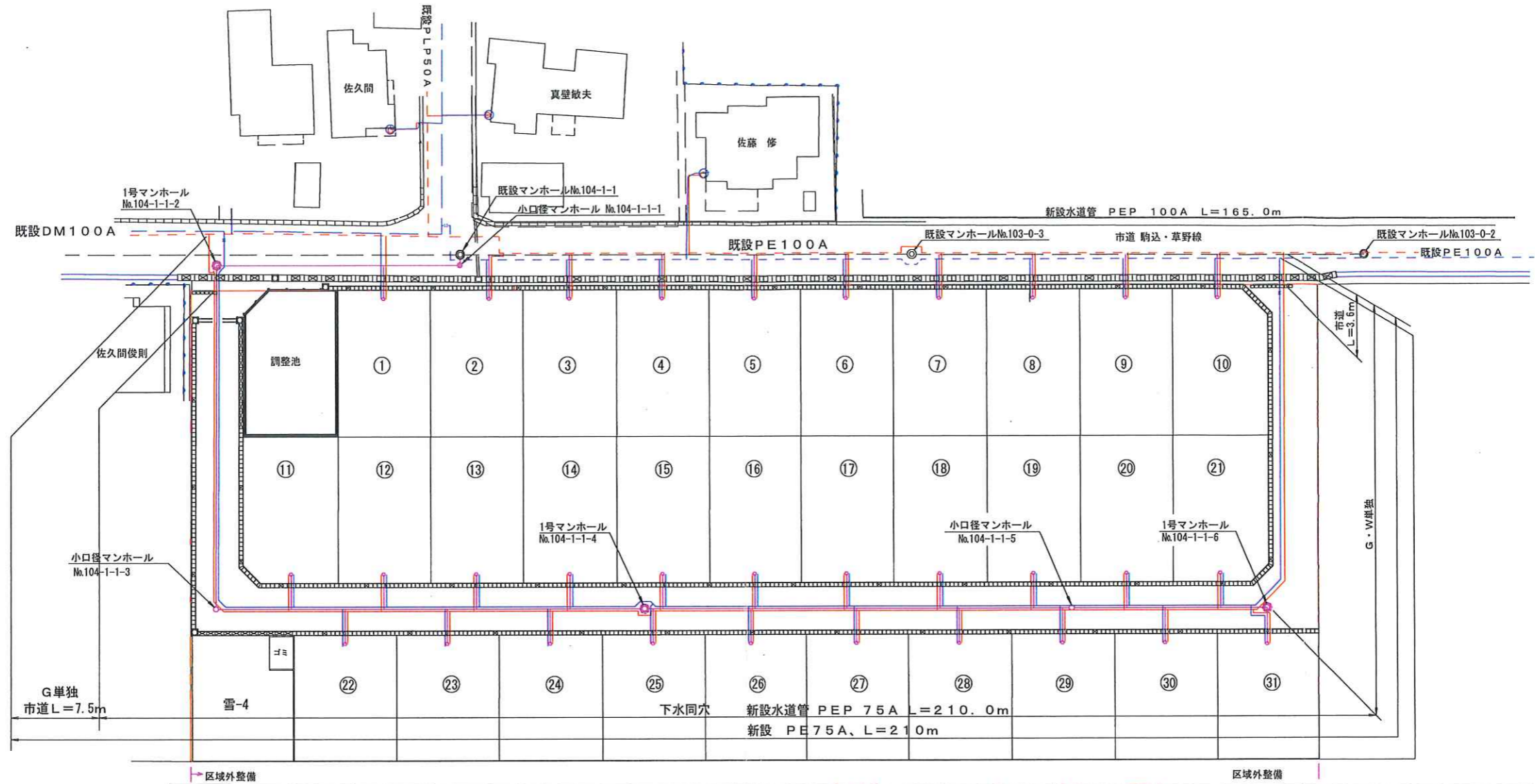
平面図 S = 1 : 500



供給管情報

| 宅地 NO | 供給管 | | 灯外内管 | | 総延長 | 備考 |
|----------|--------|-----------|--------|---------|-----------|-------|
| | 管種・口径 | 延長 | 管種・口径 | 延長 | | |
| ① | PE-25A | L= 6.30m | PE-25A | L= 2.2m | L= 8.50m | 宅内C止め |
| ② | PE-25A | L= 5.70m | PE-25A | L= 2.2m | L= 7.90m | 宅内C止め |
| ③ | PE-25A | L= 3.80m | PE-25A | L= 2.2m | L= 6.00m | 宅内C止め |
| ④ | PE-25A | L= 3.80m | PE-25A | L= 2.2m | L= 6.00m | 宅内C止め |
| ⑤ | PE-25A | L= 3.80m | PE-25A | L= 2.2m | L= 6.00m | 宅内C止め |
| ⑥ | PE-25A | L= 3.80m | PE-25A | L= 2.2m | L= 6.00m | 宅内C止め |
| ⑦ | PE-25A | L= 3.80m | PE-25A | L= 2.2m | L= 6.00m | 宅内C止め |
| ⑧ | PE-25A | L= 3.80m | PE-25A | L= 2.2m | L= 6.00m | 宅内C止め |
| ⑨ | PE-25A | L= 3.80m | PE-25A | L= 2.2m | L= 6.00m | 宅内C止め |
| ⑩ | PE-25A | L= 3.80m | PE-25A | L= 2.2m | L= 6.00m | 宅内C止め |
| ⑪ | PE-25A | L= 3.25m | PE-25A | L= 1.2m | L= 4.45m | 宅内C止め |
| ⑫ | PE-25A | L= 3.25m | PE-25A | L= 1.2m | L= 4.45m | 宅内C止め |
| ⑬ | PE-25A | L= 3.25m | PE-25A | L= 1.2m | L= 4.45m | 宅内C止め |
| ⑭ | PE-25A | L= 3.25m | PE-25A | L= 1.2m | L= 4.45m | 宅内C止め |
| ⑮ | PE-25A | L= 3.25m | PE-25A | L= 1.2m | L= 4.45m | 宅内C止め |
| ⑯ | PE-25A | L= 3.25m | PE-25A | L= 1.2m | L= 4.45m | 宅内C止め |
| ⑰ | PE-25A | L= 3.25m | PE-25A | L= 1.2m | L= 4.45m | 宅内C止め |
| ⑱ | PE-25A | L= 3.25m | PE-25A | L= 1.2m | L= 4.45m | 宅内C止め |
| ⑲ | PE-25A | L= 3.25m | PE-25A | L= 1.2m | L= 4.45m | 宅内C止め |
| ⑳ | PE-25A | L= 3.25m | PE-25A | L= 1.2m | L= 4.45m | 宅内C止め |
| ㉑ | PE-25A | L= 3.25m | PE-25A | L= 1.2m | L= 4.45m | 宅内C止め |
| ㉒ | PE-25A | L= 2.75m | PE-25A | L= 1.2m | L= 3.95m | 宅内C止め |
| ㉓ | PE-25A | L= 2.75m | PE-25A | L= 1.2m | L= 3.95m | 宅内C止め |
| ㉔ | PE-25A | L= 2.75m | PE-25A | L= 1.2m | L= 3.95m | 宅内C止め |
| ㉕ | PE-25A | L= 2.75m | PE-25A | L= 1.2m | L= 3.95m | 宅内C止め |
| ㉖ | PE-25A | L= 2.75m | PE-25A | L= 1.2m | L= 3.95m | 宅内C止め |
| ㉗ | PE-25A | L= 2.75m | PE-25A | L= 1.2m | L= 3.95m | 宅内C止め |
| ㉘ | PE-25A | L= 2.75m | PE-25A | L= 1.2m | L= 3.95m | 宅内C止め |
| ㉙ | PE-25A | L= 2.75m | PE-25A | L= 1.2m | L= 3.95m | 宅内C止め |
| ㉚ | PE-25A | L= 2.75m | PE-25A | L= 1.2m | L= 3.95m | 宅内C止め |
| ㉛ | PE-25A | L= 2.75m | PE-25A | L= 1.2m | L= 3.95m | 宅内C止め |
| ㉜ | PE-25A | L= 2.75m | PE-25A | L= 1.2m | L= 3.95m | 宅内C止め |
| ㉝ | PE-25A | L= 2.75m | PE-25A | L= 1.2m | L= 3.95m | 宅内C止め |
| ㉞ | PE-25A | L= 2.75m | PE-25A | L= 1.2m | L= 3.95m | 宅内C止め |
| ㉟ | PE-25A | L= 2.75m | PE-25A | L= 1.2m | L= 3.95m | 宅内C止め |
| ㊱ | PE-25A | L= 4.70m | PE-25A | L= 1.2m | L= 5.90m | 宅内C止め |
| ㊲ | PE-25A | L= 3.25m | PE-25A | L= 1.2m | L= 4.45m | 宅内C止め |
| ㊳ | PE-25A | L= 3.25m | PE-25A | L= 1.2m | L= 4.45m | 宅内C止め |
| ㊴ | PE-25A | L= 2.75m | PE-25A | L= 1.2m | L= 3.95m | 宅内C止め |
| ㊵ | PE-25A | L= 2.75m | PE-25A | L= 1.2m | L= 3.95m | 宅内C止め |
| ㊶ | PE-25A | L= 2.75m | PE-25A | L= 1.2m | L= 3.95m | 宅内C止め |
| ㊷ | PE-25A | L= 1.20m | PE-25A | L= 1.2m | L= 2.40m | 宅内C止め |
| 合計 | PE-25A | L=123.55m | PE-25A | L=54.4m | L=177.95m | |

上水道計画平面図 S=1:500



| | | | |
|-------|----------|------|------------------|
| 工事名 | | 図面番号 | |
| 図面名 | 上水道計画平面図 | 縮尺 | S=1:500 |
| 作成年月日 | 令和2年12月日 | 作成者 | 1級土木施工管理技士 奥田 喜彦 |

